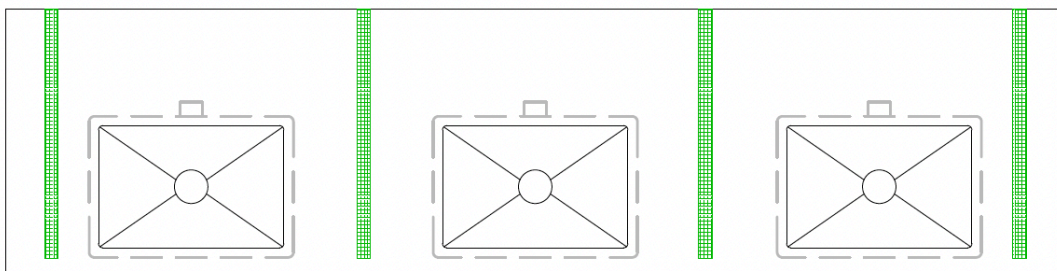
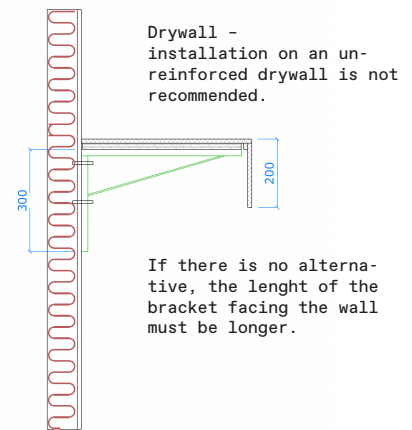
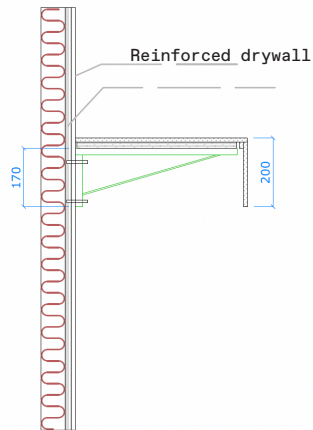
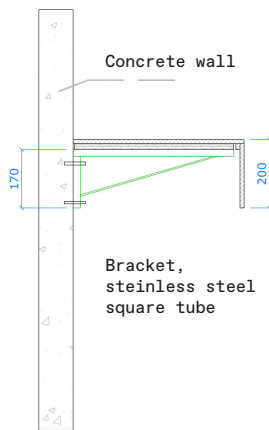


# DURAT

## SUPPORTS AND BRACKETS

The minimum height of the edge plate on the visible sides is 180 mm, when the bracket can be anchored to a concrete wall or a reinforced drywall. The height of the part of the bracket that is facing the wall is 150 mm (the thickness of the worktop is 30 mm).

Installation on an unreinforced drywall is not recommended. If there is no alternative, the length of the bracket facing the wall must be at least 300 mm.



Quantity and placement of brackets according to assembly of top.