

FABRICATIONS

V. 1.0



bencore
COMPOSITE PANELS FOR ARCHITECTURE

3mm SHARP FLUSH EDGE
cod. LTB0010000000

bencore
COMPOSITE PANELS FOR ARCHITECTURE

3mm FLUSH EDGE + 2x2mm BEVEL FOR SILICONE
COD. LBV0000000000

bencore
COMPOSITE PANELS FOR ARCHITECTURE

3mm ROUND FLUSH EDGE (R = 1.6mm)
COD. LTB0020000000

bencore
COMPOSITE PANELS FOR ARCHITECTURE

3mm EXTENDED EDGE
Cod. EDGEFIN000000

bencore
COMPOSITE PANELS FOR ARCHITECTURE

SPLINE JOINT + 2x2mm BEVEL ON PANEL EDGE
Cod. L0K0010000000

bencore
COMPOSITE PANELS FOR ARCHITECTURE

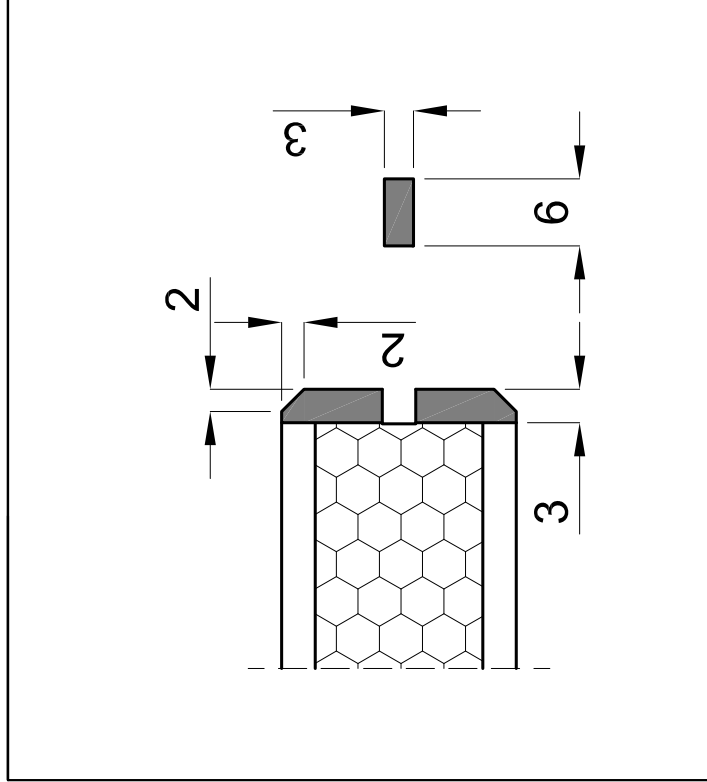
20x63mm OVAL-INSERT JOINT + 2x2mm BEVEL ON PANEL EDGE
Cod. INS6320040000

bencore
COMPOSITE PANELS FOR ARCHITECTURE

3mm SHARP FLUSH EDGE + SPLINE JOINT
Cod. L0BL0K00000000

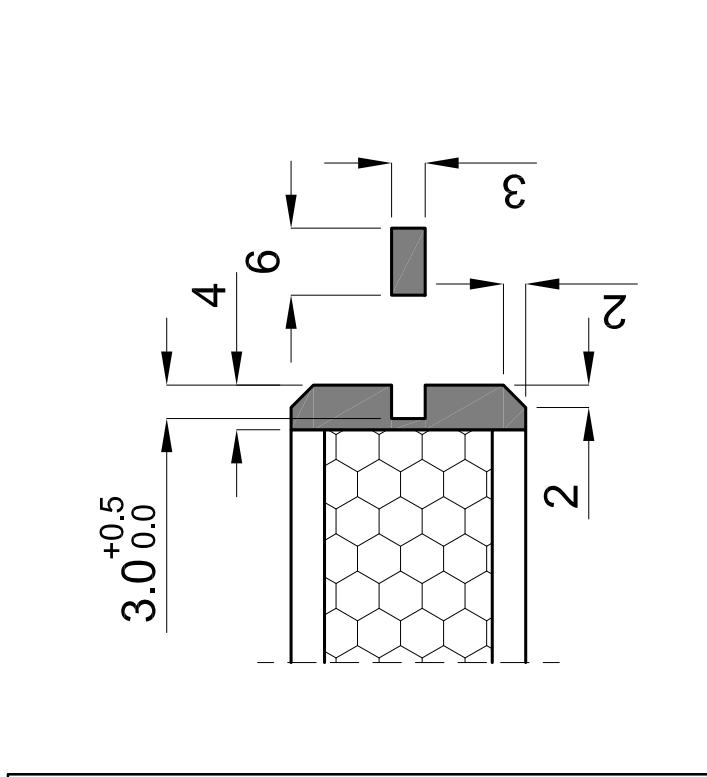
bencore
COMPOSITE PANELS FOR ARCHITECTURE

4mm SHARP FLUSH EDGE + SPLINE JOINT
Cod. L0BL0K00100011



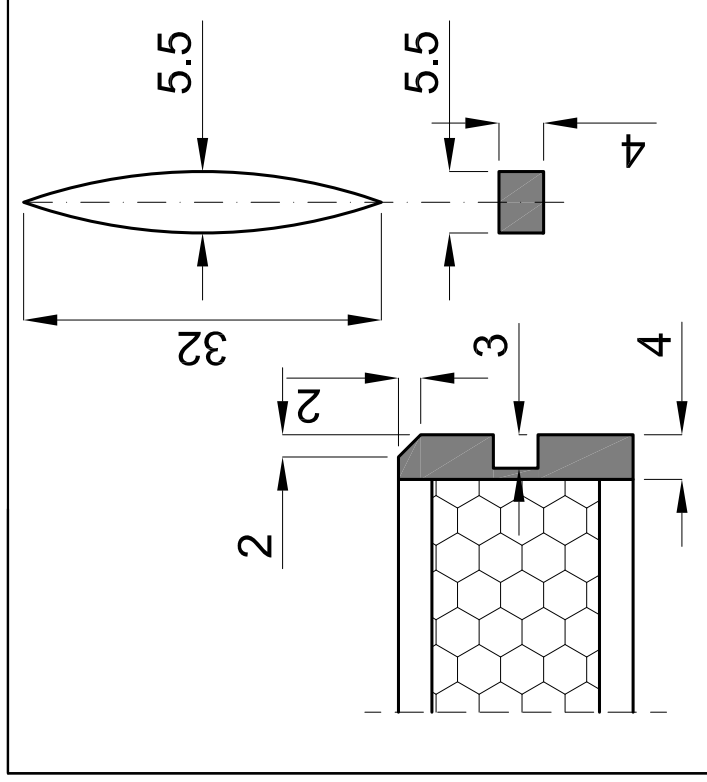
bencore
COMPOSITE PANELS FOR ARCHITECTURE

3mm FLUSH EDGE + 2x2mm BEVEL + SPLINE JOINT
COD. LBL0K10000000



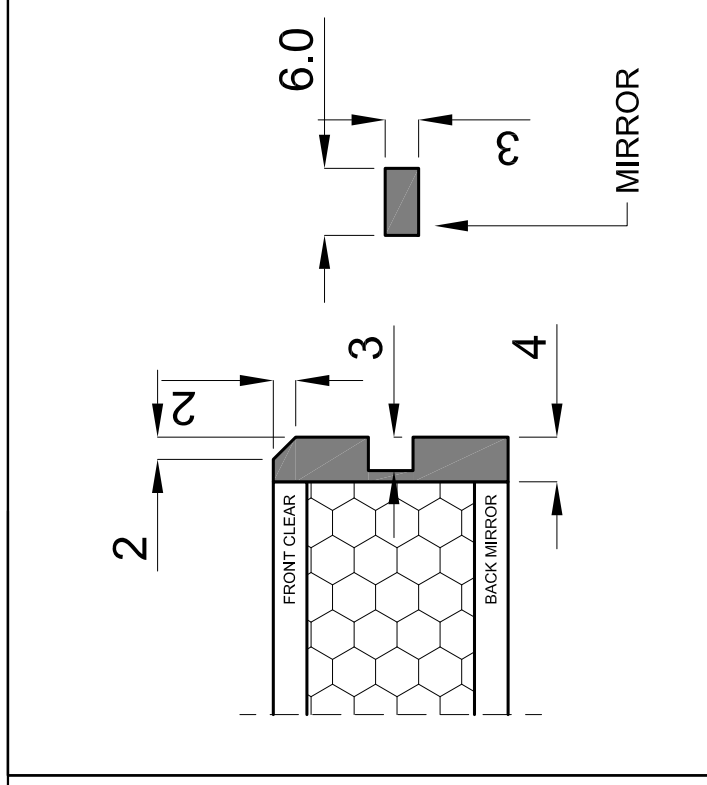
bencore
COMPOSITE PANELS FOR ARCHITECTURE

4mm SHARP EDGE + 2x2mm BEVEL + SPLINE JOINT
COD. L0BL0K0020011



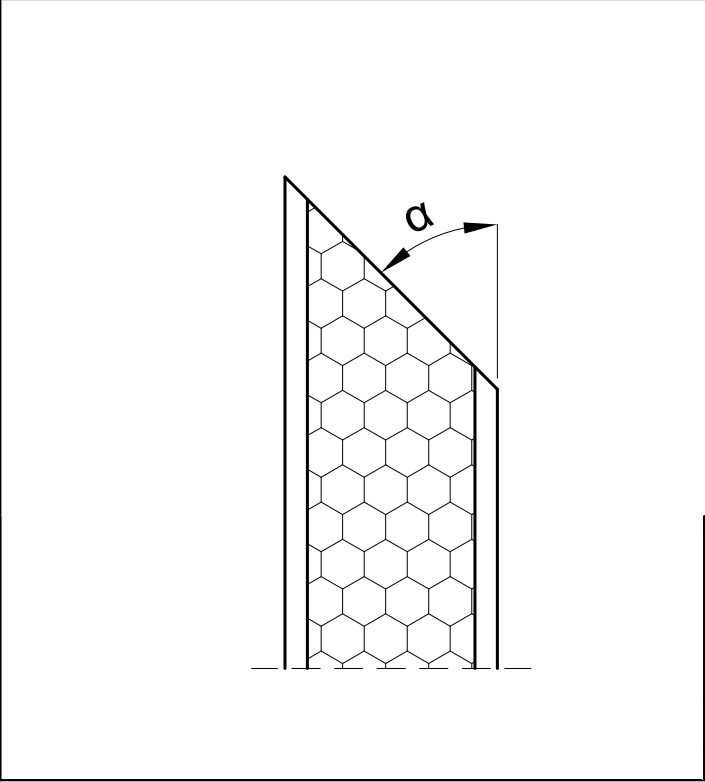
bencore
COMPOSITE PANELS FOR ARCHITECTURE

4mm FLUSH EDGE + 2x2mm BEVEL + 32x5.5mm OVAL INSERT
COD. INS3205040000



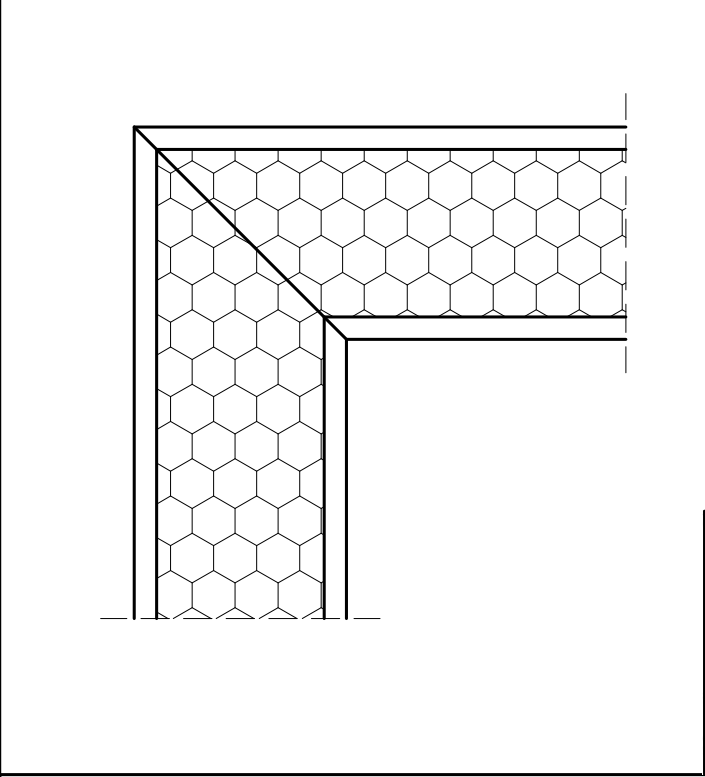
bencore
COMPOSITE PANELS FOR ARCHITECTURE

4mm FLUSH EDGE + 2x2mm BEVEL + MIRROR SPLINE JOINT
COD. L0BL0K002M011



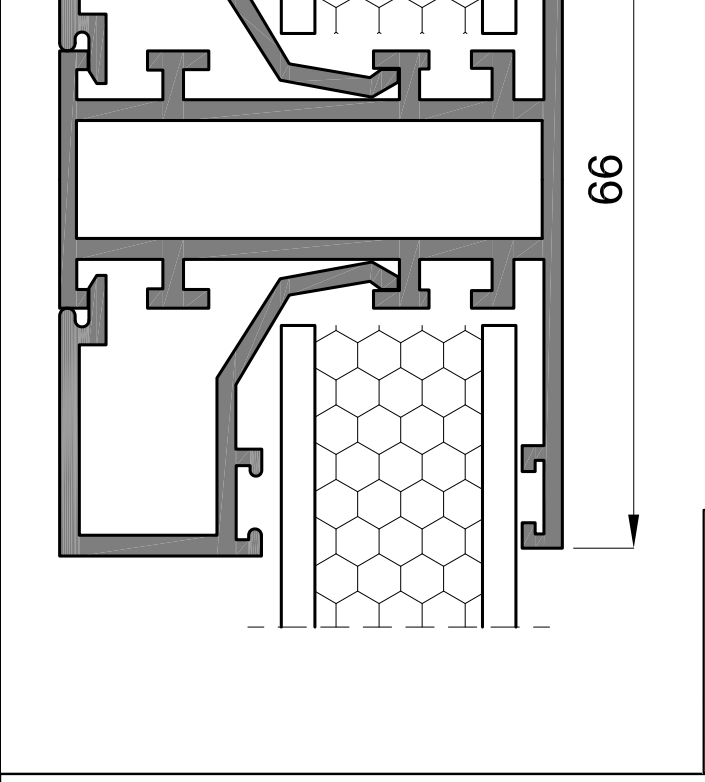
bencore
COMPOSITE PANELS FOR ARCHITECTURE

ANGLED CUT
COD. LT4500000000



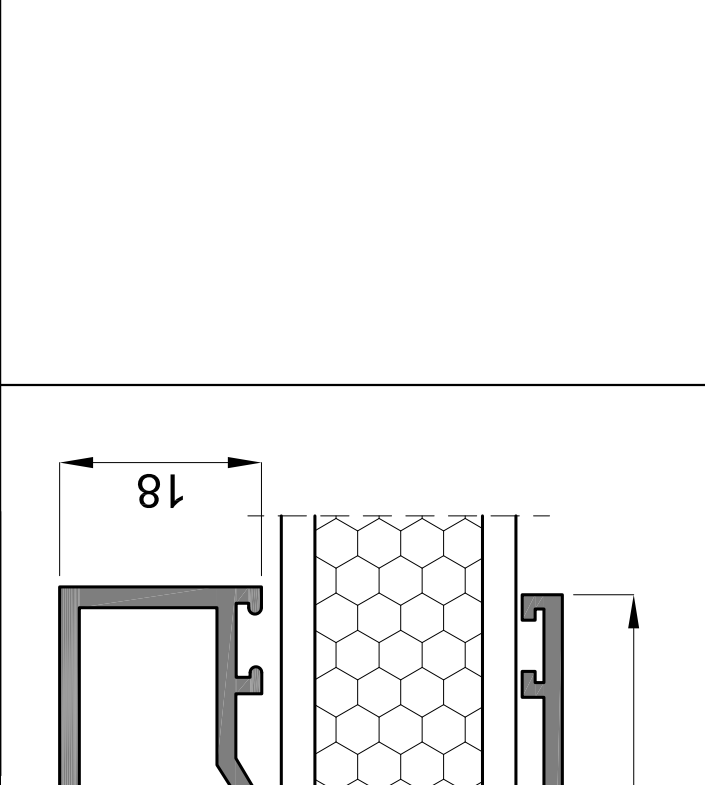
bencore
COMPOSITE PANELS FOR ARCHITECTURE

MITERED CORNER
COD. LT4510000000



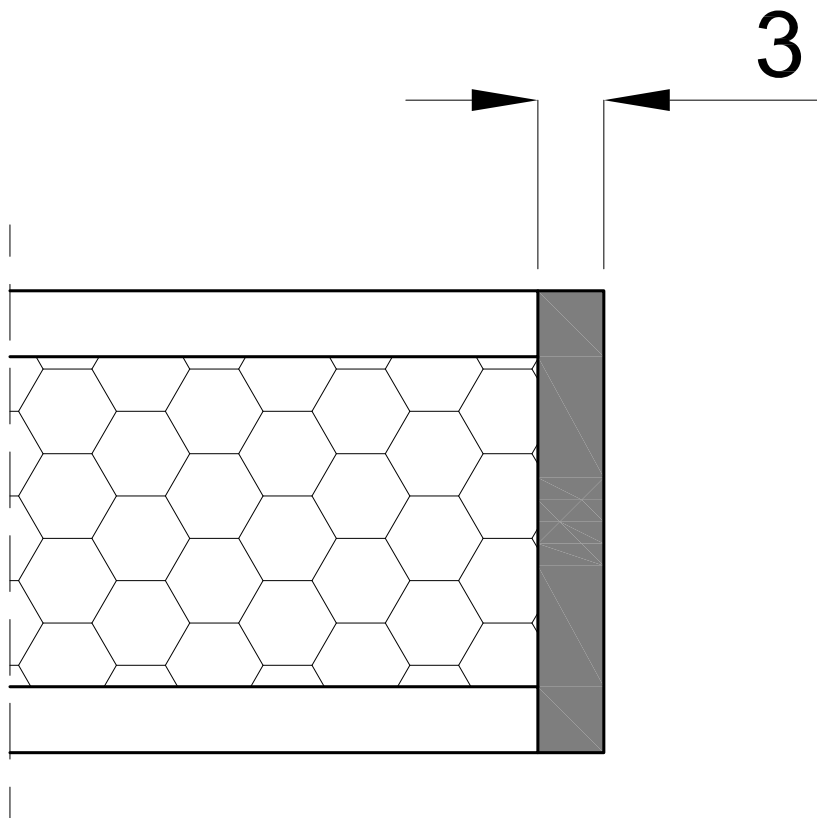
bencore
COMPOSITE PANELS FOR ARCHITECTURE

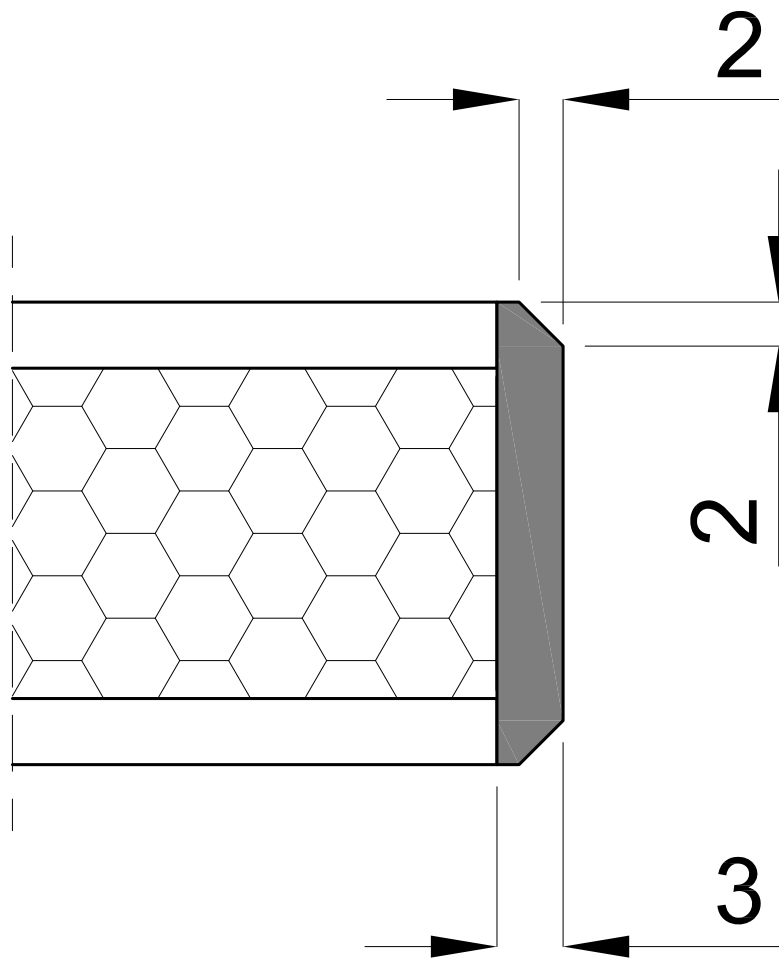
ALUMINIUM PROFILE JOINT
COD. PROFVZ1558000

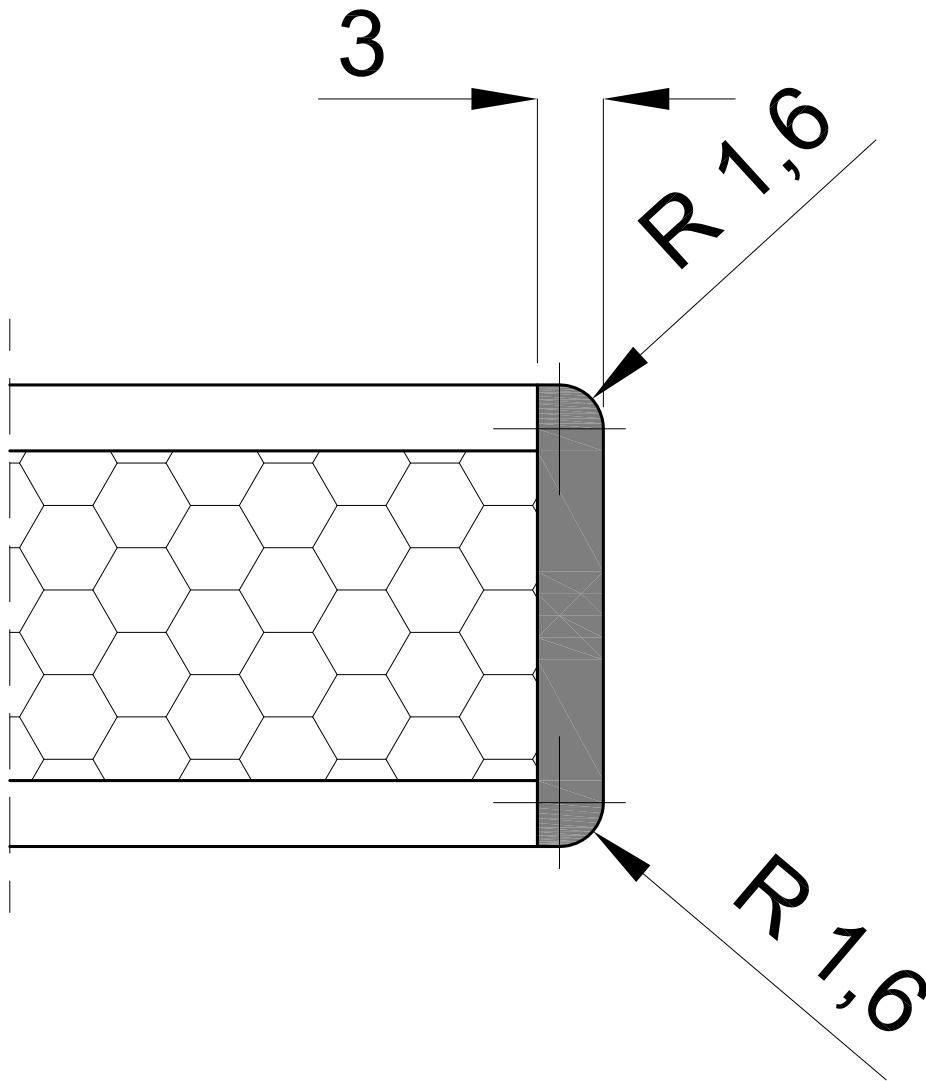


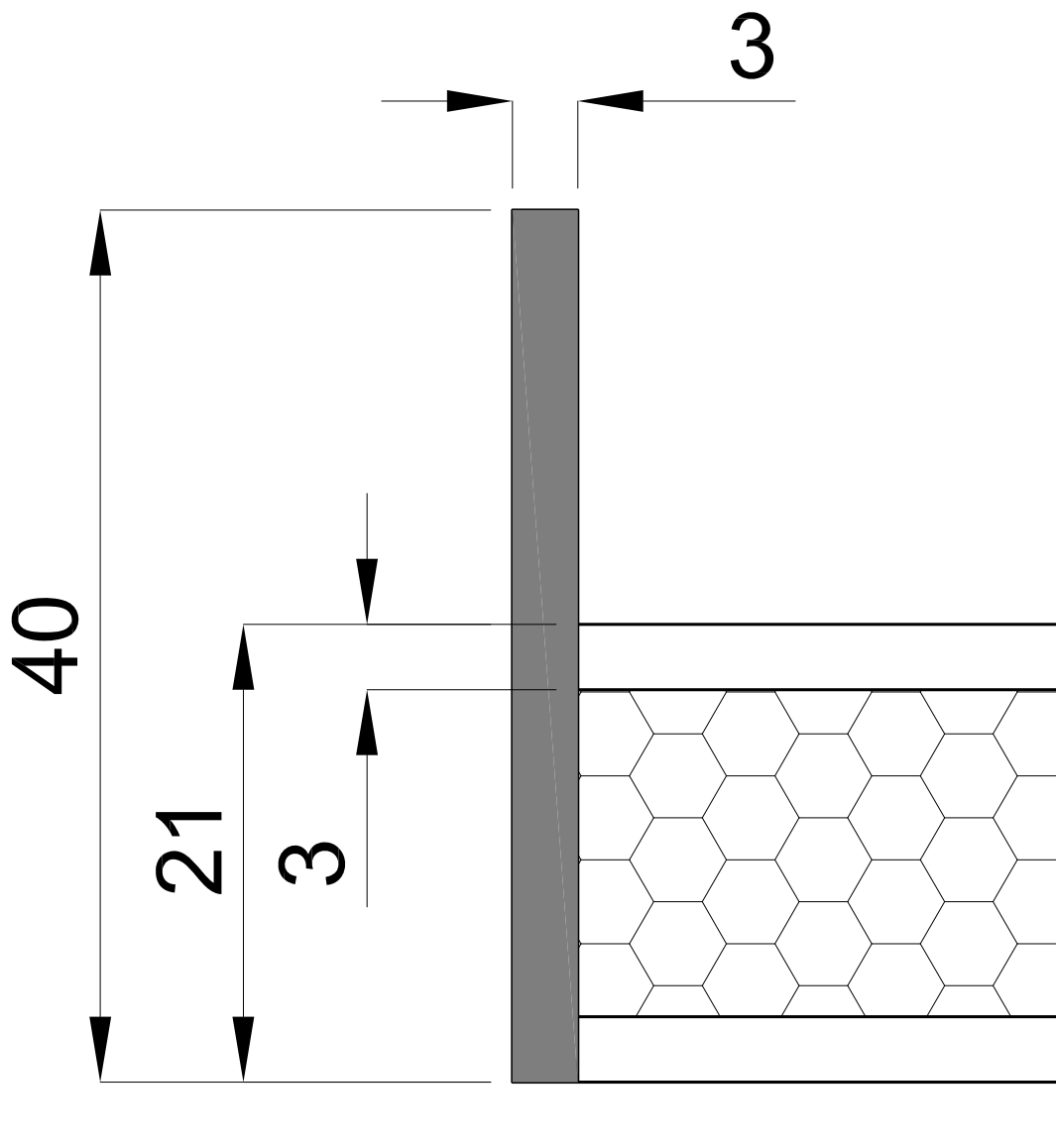
bencore
COMPOSITE PANELS FOR ARCHITECTURE

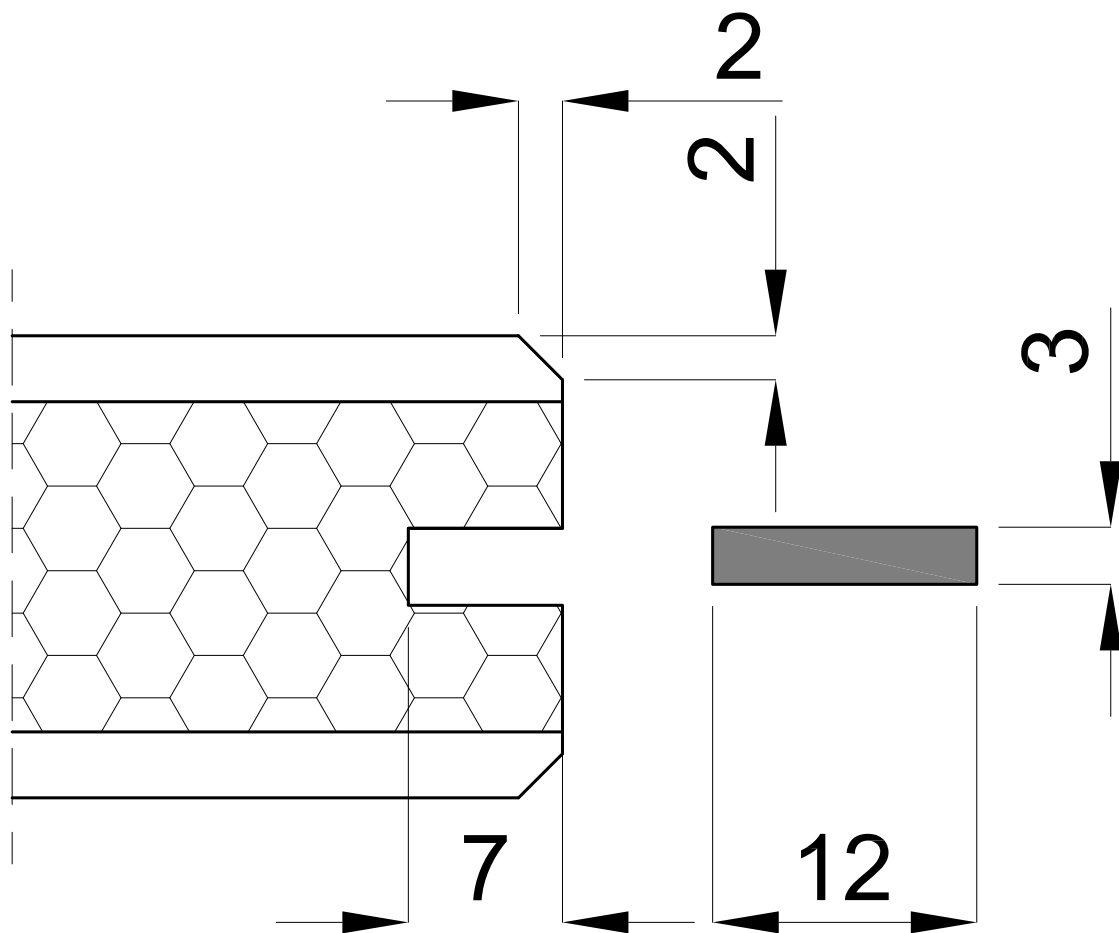
4mm FLUSH EDGE + 2x2mm BEVEL + MIRROR SPLINE JOINT
COD. L0BL0K002M011

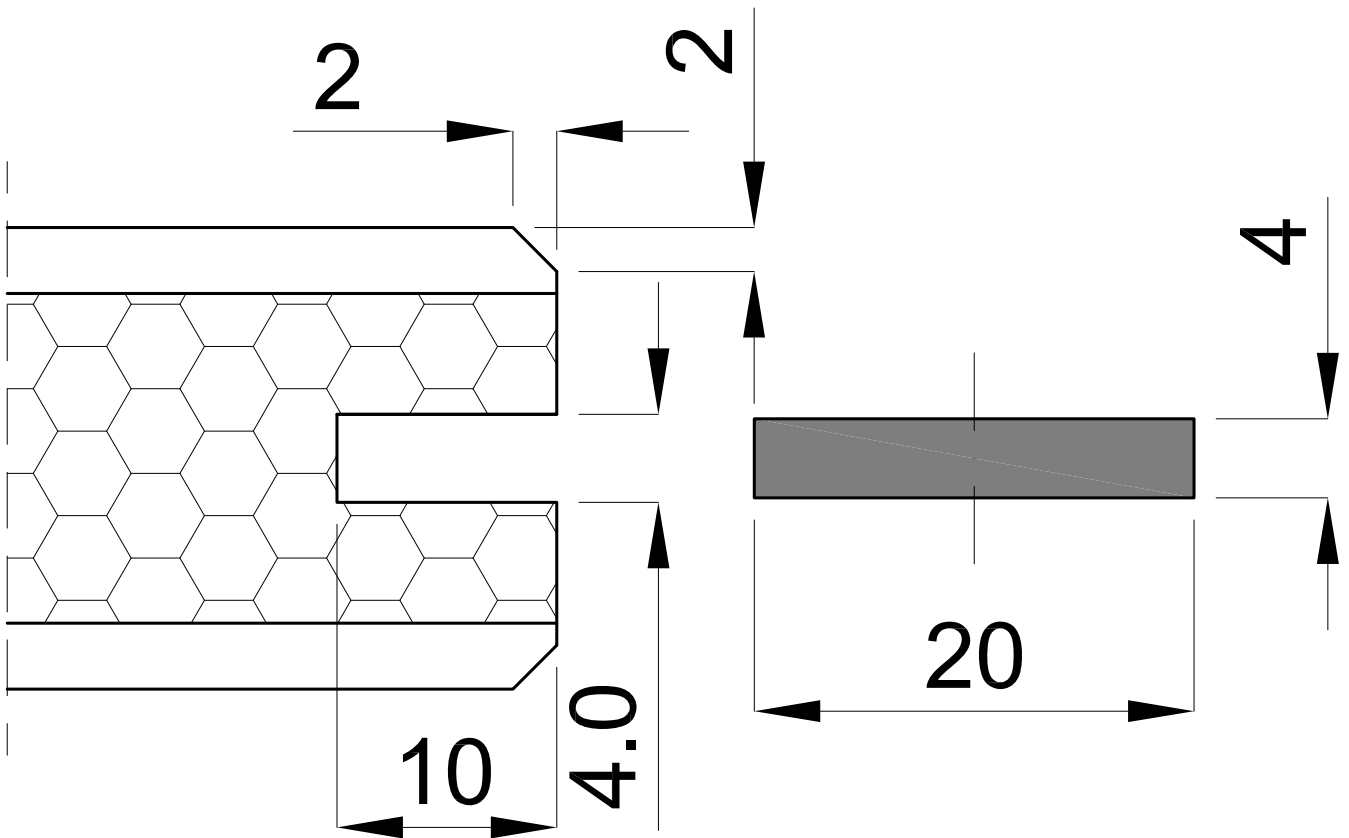
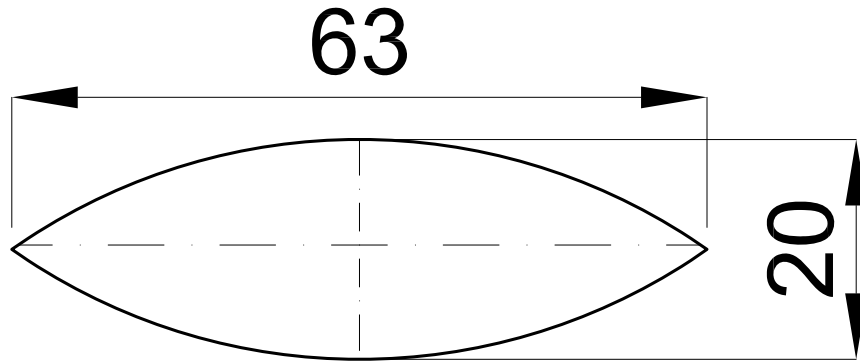


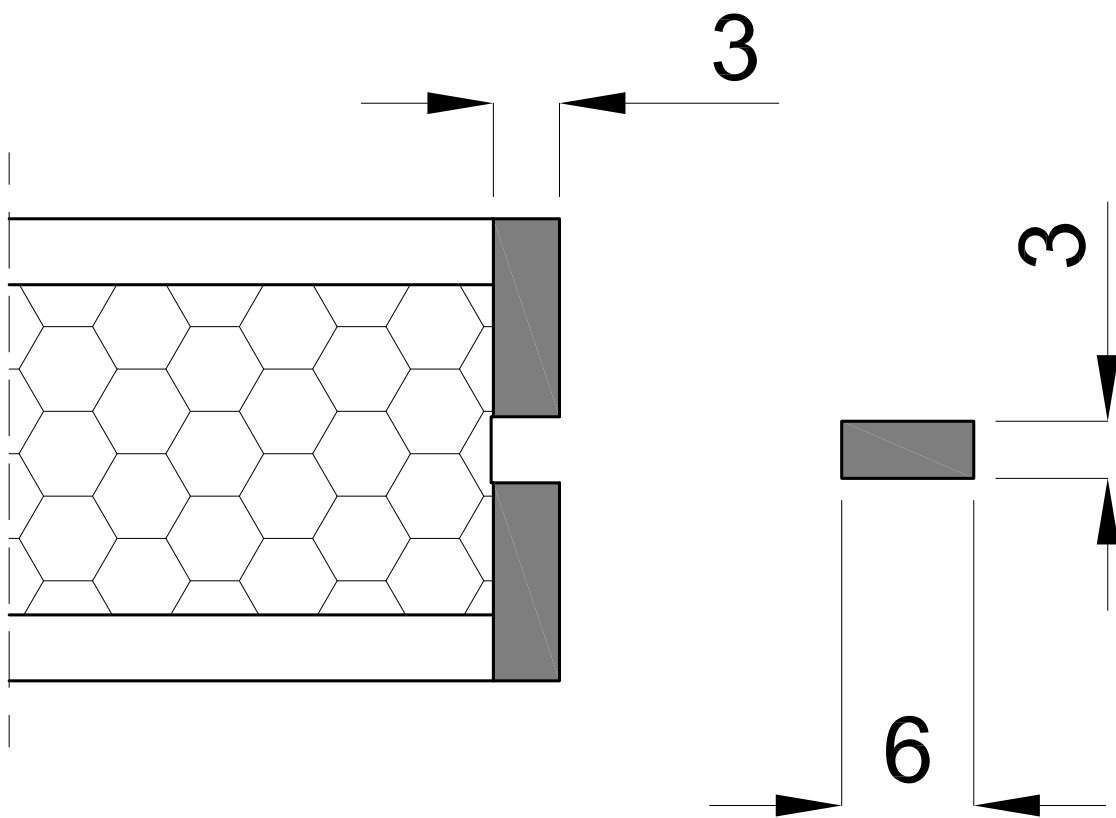


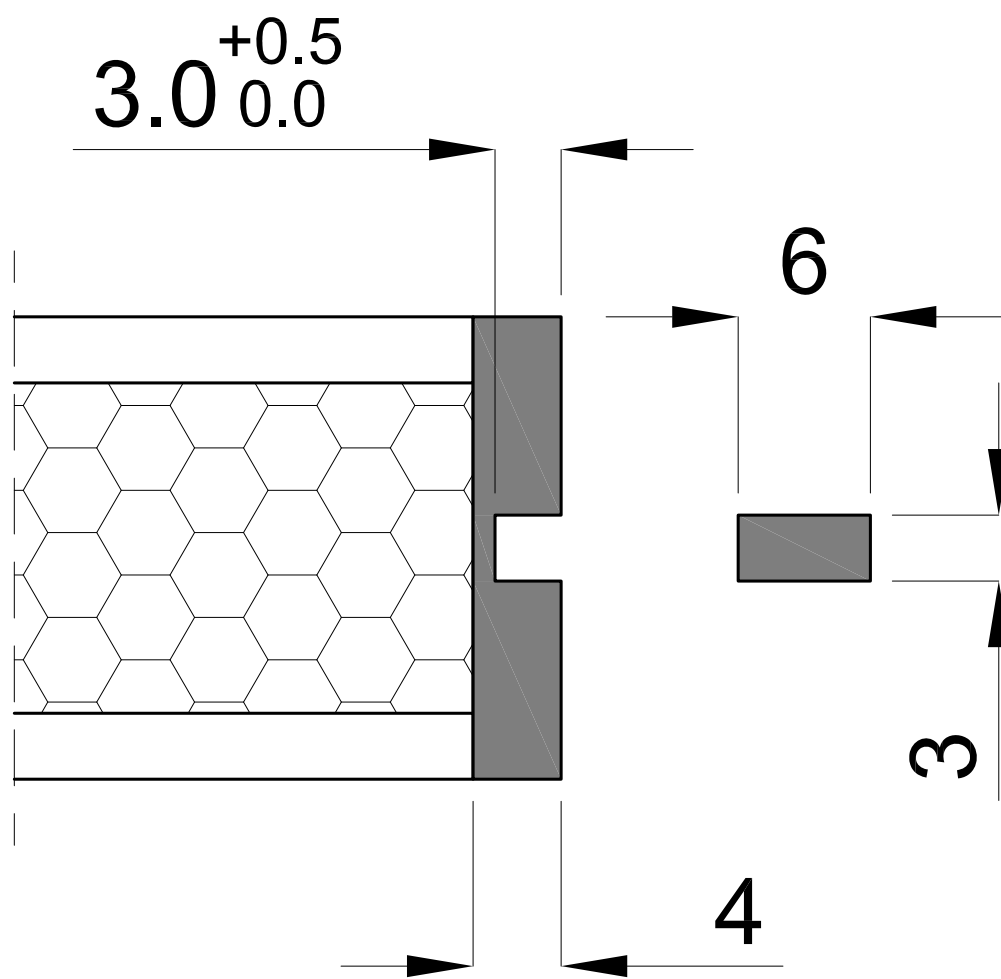


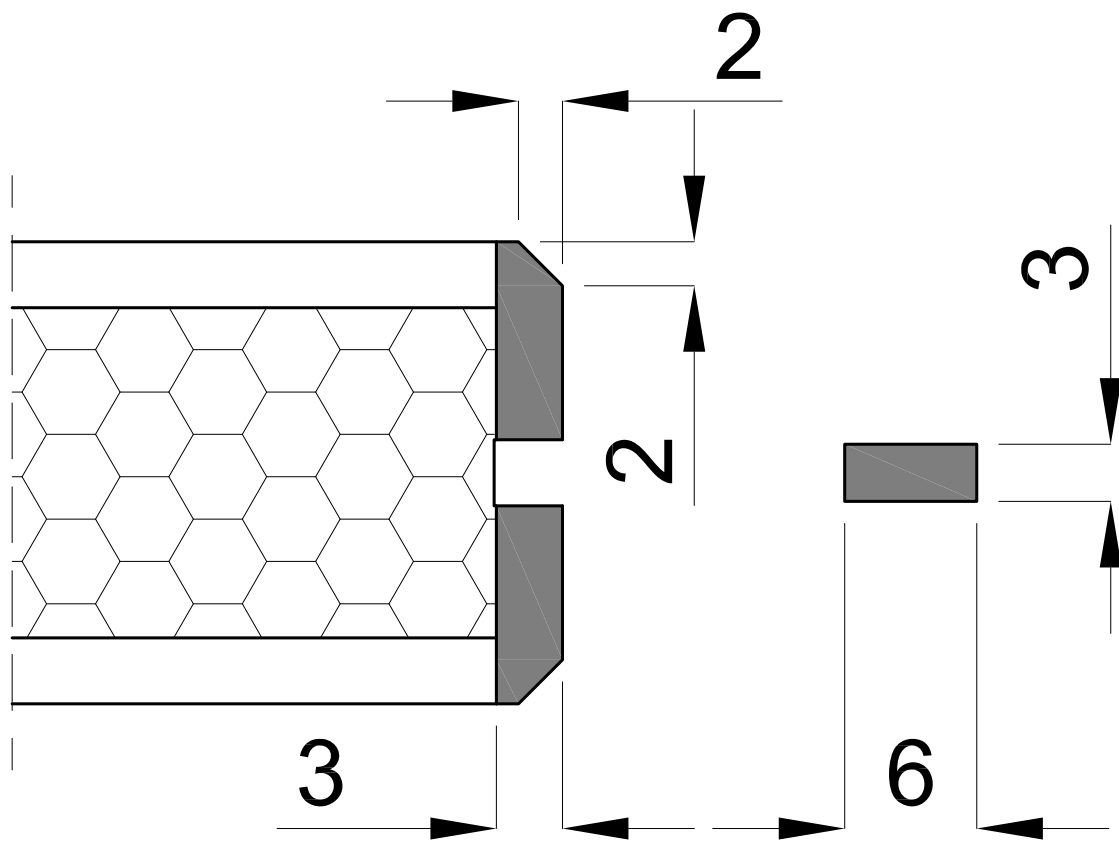


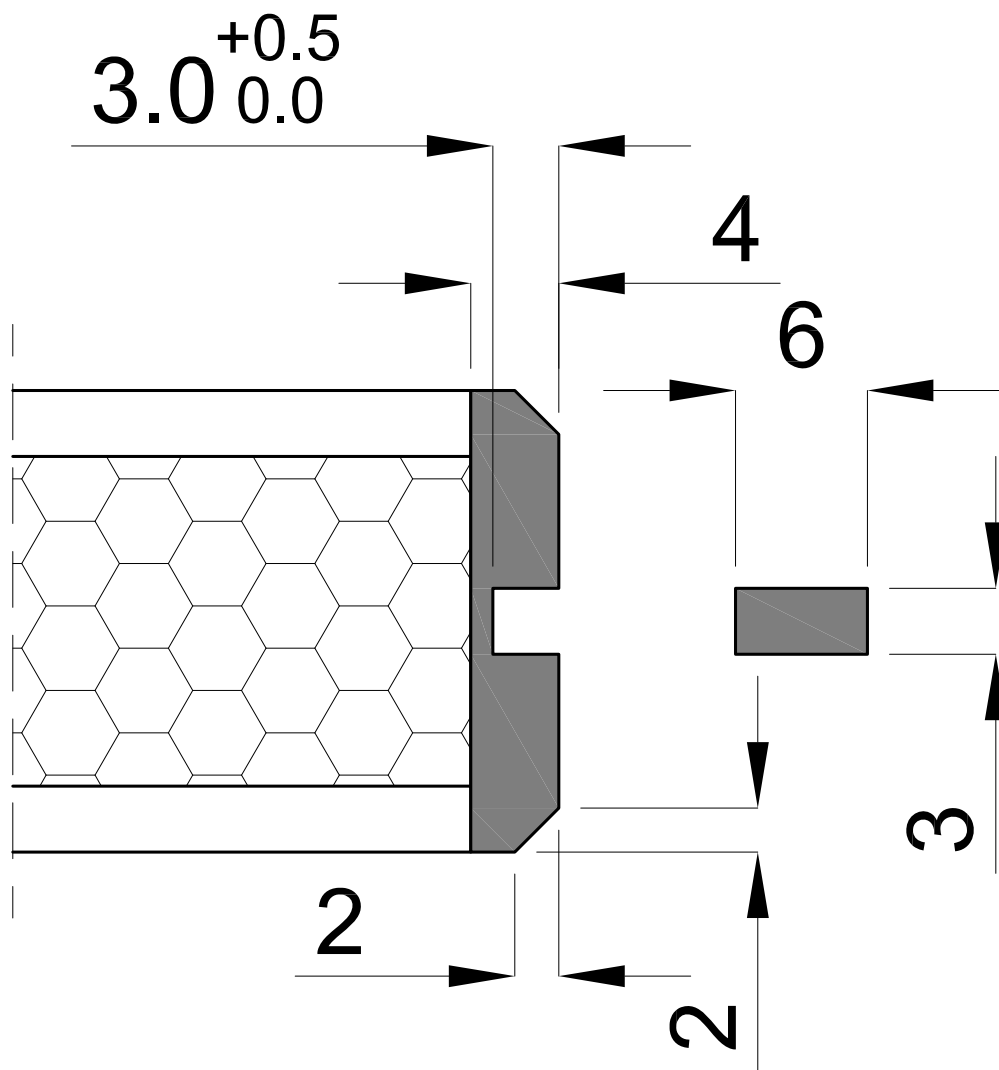


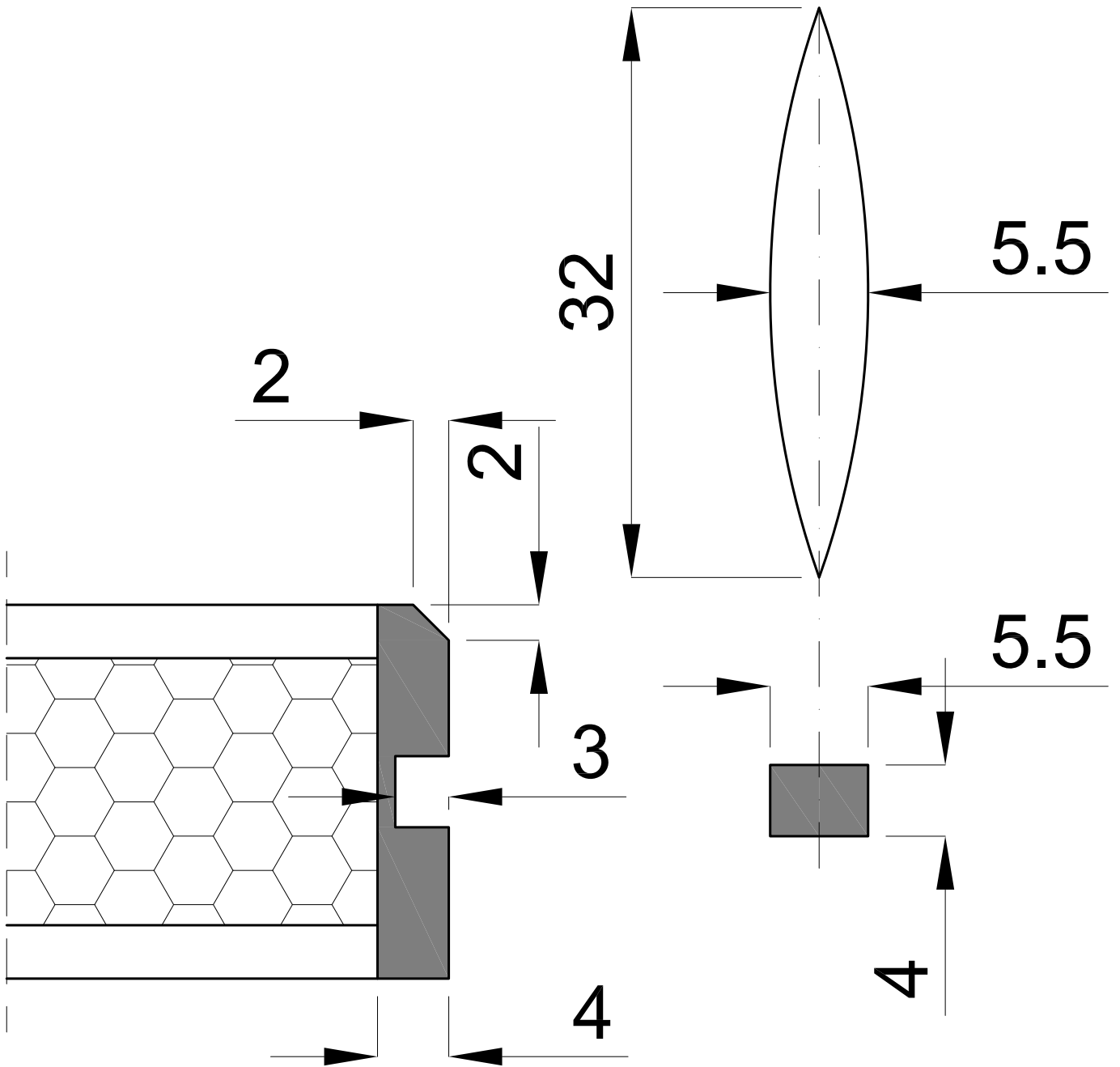






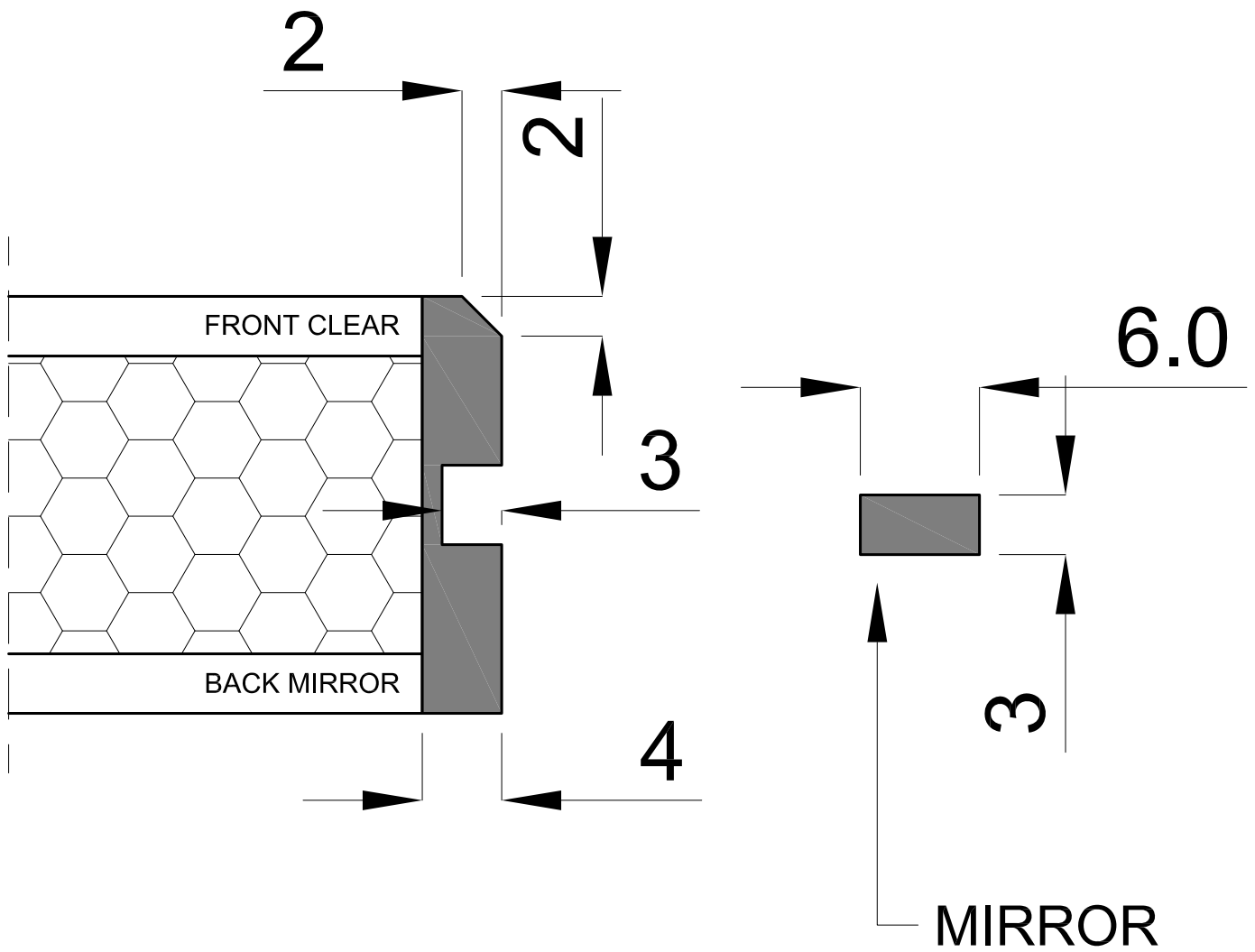


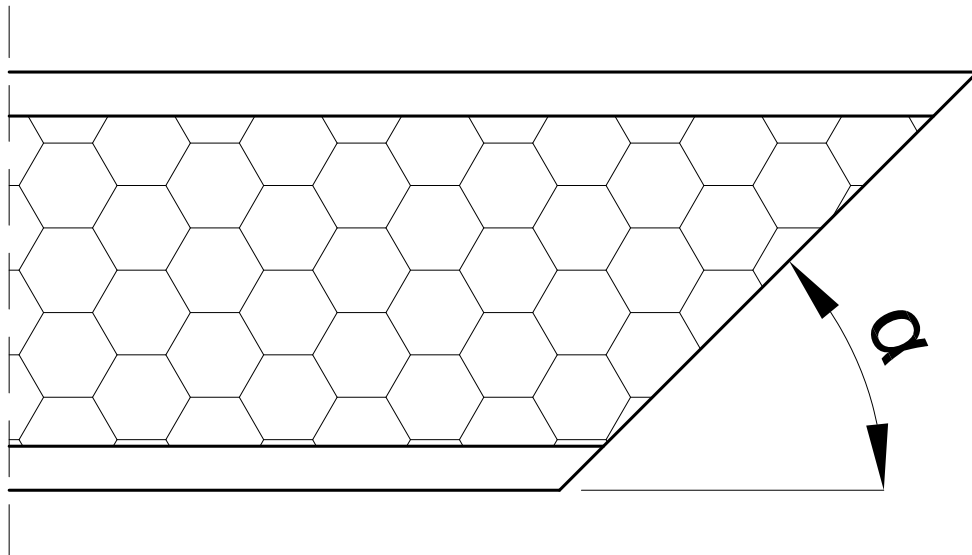




 **bencore**[®]
COMPOSITE PANELS FOR ARCHITECTURE

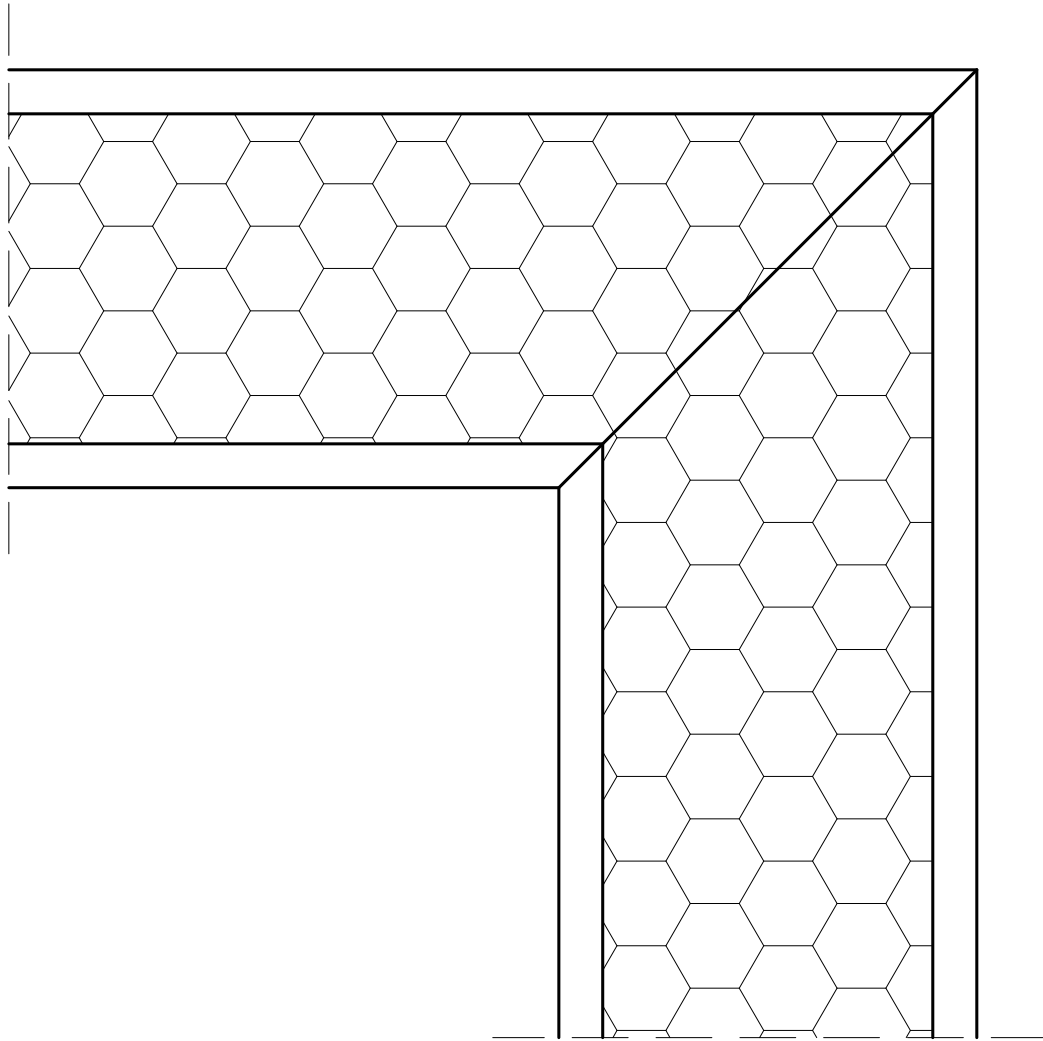
4mm FLUSH EDGE + 2x2mm BEVEL + 32x5.5mm OVAL INSERT
cod. **INS3205040000**





 **bencore**[®]
COMPOSITE PANELS FOR ARCHITECTURE

ANGLED CUT
cod. **LT4500000000**



 **bencore**[®]
COMPOSITE PANELS FOR ARCHITECTURE

MITERED CORNER
cod. **LT45I00000000**

